



Let **UK** Home

**3 Bedrooms**

**Flat**

**Located in London**

**£6,300 Per Month**



[info@letukhome.co.uk](mailto:info@letukhome.co.uk)

<https://www.letukhome.co.uk/>

01795 358 886



# 12 New Broadway London

W5 2XA



Let UK Home are excited to offer this spectacular three bedroom apartment in the heart of Quartz House, part of the Dickens Yard development.

This property comprises a large bright open plan kitchen and living room leading to a large private balcony with great views, three double bedrooms(two with wardrobes and en-suites), a large family sized bathroom, and ample storage.

The centrepiece of Dickens Yard is its elegant private spa. Featuring a professionally equipped, state-of-the-art gymnasium, swimming pool, luxury sauna, steam room and personal treatment room, it provides a tranquil haven where residents can relax, exercise and escape the many demands and pressures of their busy lives. Furthermore, residents will also benefit from a concierge and an unrivalled selection of shops, bars, restaurants, leisure facilities and beautiful courtyards.

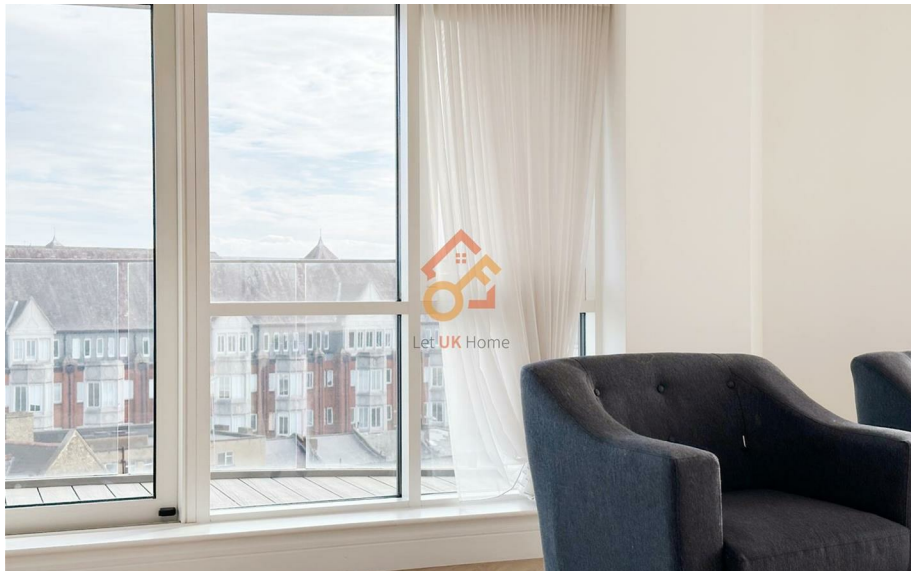
Dickens Yard is home to stylish and modern residences, a variety of boutique shops, and delicious and exquisite restaurants. Ealing Broadway Station is just a stone's throw away, providing effortless access to all the capital's myriad attractions, including prestigious shopping destinations such as Bond Street, Regent Street and Knightsbridge, and London's largest retail centre at Westfield. The development is surrounded by cultural heritage with rich historical background. Nearby, there are the most attractive cultural sanctuaries such as Ealing Studios (the world's earliest film shooting base) and Ealing Jazz Club. The development is just minutes from Ealing Common and Ealing Green. The picturesque Walpole Park, Pitshanger Park and nearby Haven Green all offer wonderful opportunities for walking, running and cycling, or simply enjoying a breath of fresh air.

# 12 New Broadway London

£6,300 Per Month




- 6th Floor
- 24h Security
- The Gym
- CCTV
- Virtual Tour Available
- Concierge Service
- Swimming Pool
- Sauna & Steam Room
- EPC Rating: B




**SIXTH FLOOR**

**ELEVATION**



**MASTERPLAN**



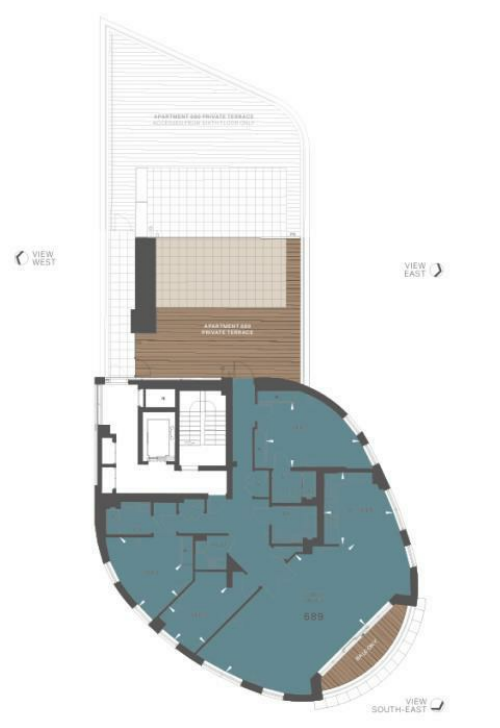
**APARTMENT SIZE**

● 3 BED ELITE APARTMENT

Floor plans shown for The Elitist Apartment are for guidance only and are not intended to be used for legal purposes. All measurements are approximate and are for general guidance purposes only. All measurements are taken to the internal face of the wall unless otherwise stated.

**KEY**

1. CLOSET/WARDROBE	10. TERRACE	19. STAIRCASE	28. UTILITY CUPBOARD	35. FRONT DOOR
2. HALLWAY	11. BALCONY	20. BATHROOM	29. WASHING MACHINE	36. FRONT PORCH
3. KITCHEN	12. TERRACE	21. BATH	30. WASHING MACHINE	37. FRONT PORCH
4. LIVING/DINING	13. TERRACE	22. SHOWER	31. WASHING MACHINE	38. FRONT PORCH
5. KITCHEN	14. TERRACE	23. SHOWER	32. WASHING MACHINE	39. FRONT PORCH
6. BEDROOM 1	15. TERRACE	24. SHOWER	33. WASHING MACHINE	40. FRONT PORCH
7. BEDROOM 2	16. TERRACE	25. SHOWER	34. WASHING MACHINE	41. FRONT PORCH
8. BEDROOM 3	17. TERRACE	26. SHOWER	34. WASHING MACHINE	41. FRONT PORCH
9. BEDROOM 4	18. TERRACE	27. SHOWER	34. WASHING MACHINE	41. FRONT PORCH



Let **UK** Home

3F 2 Eastbourne Terrace  
Paddington  
London  
W2 6LG

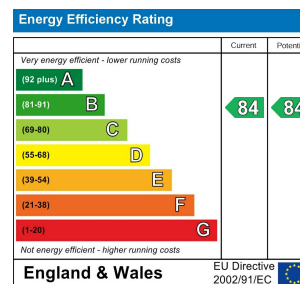
01795 358 886

info@letukhome.co.uk

**Council Tax Band: G**

**Local Authority:**

Agents Note: Whilst every care has been taken to prepare these particulars, they are for guidance purposes only. All measurements are approximate and are for general guidance purposes only and whilst every care has been taken to ensure their accuracy, they should not be relied upon and potential buyers/tenants are advised to recheck the measurements.



<https://www.letukhome.co.uk/>